

Product Change Notification

Issue Date: August 8, 2019

Product Name: ICE-DB-T7-i2 Carry board

Status: Implement on next production

This notice is to inform you of changes to the ICE-DB-T7-i2 carry board.

Reason for Change

Enhance the design reference of the ICE-DB-T7-i2 carry board.

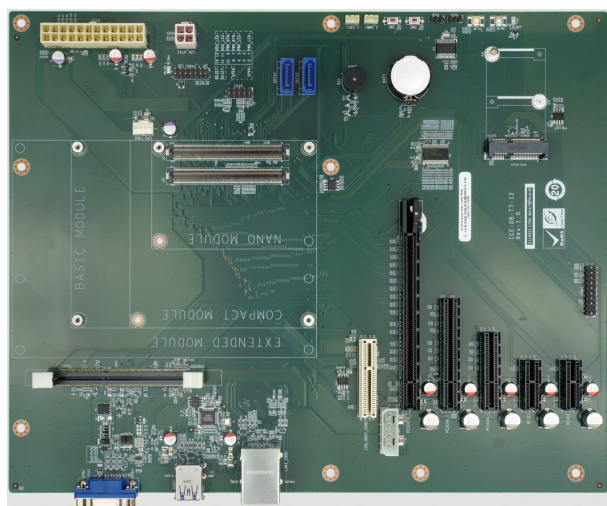
Description of Change

Change the PCB design to equip with an SFP+ 10GbE LAN port via Inphi WPCS4227C.A2 chip, and a Port 80 for debugging.

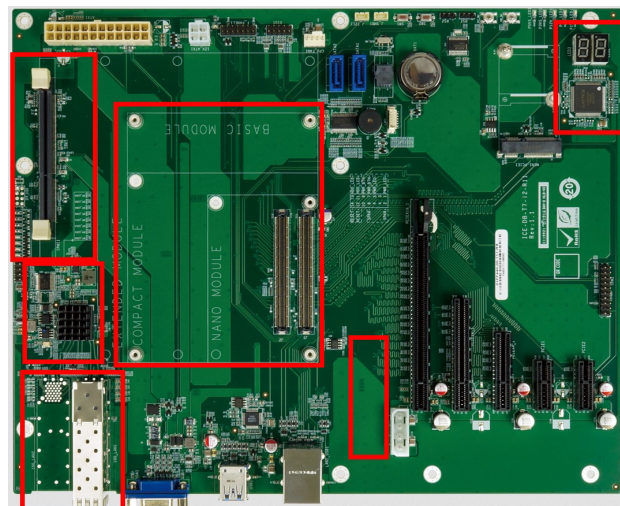
Affected Model

Affected Model	New Version
ICE-DB-T7-i2-R10	ICE-DB-T7-i2-R11

ICE-DB-T7-i2-R10



ICE-DB-T7-i2-R11



Affected by This Change

- | | | | |
|--|-------------------------------------|--|----------------------------------|
| <input checked="" type="checkbox"/> Specifications | <input type="checkbox"/> Dimensions | <input checked="" type="checkbox"/> Appearance | <input type="checkbox"/> Package |
| <input type="checkbox"/> Certification | <input type="checkbox"/> Label | <input checked="" type="checkbox"/> BIOS | <input type="checkbox"/> Driver |

For more details please refer to the latest datasheet or visit <http://www.ieiworld.com>.

*Best Regards,
Kasper Tsai
Product Manager
IEI Integration Corp.*